

AccuVac Series

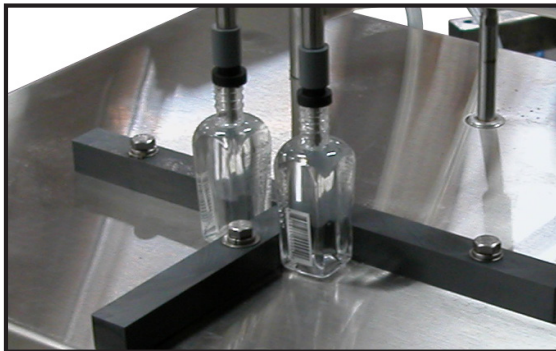
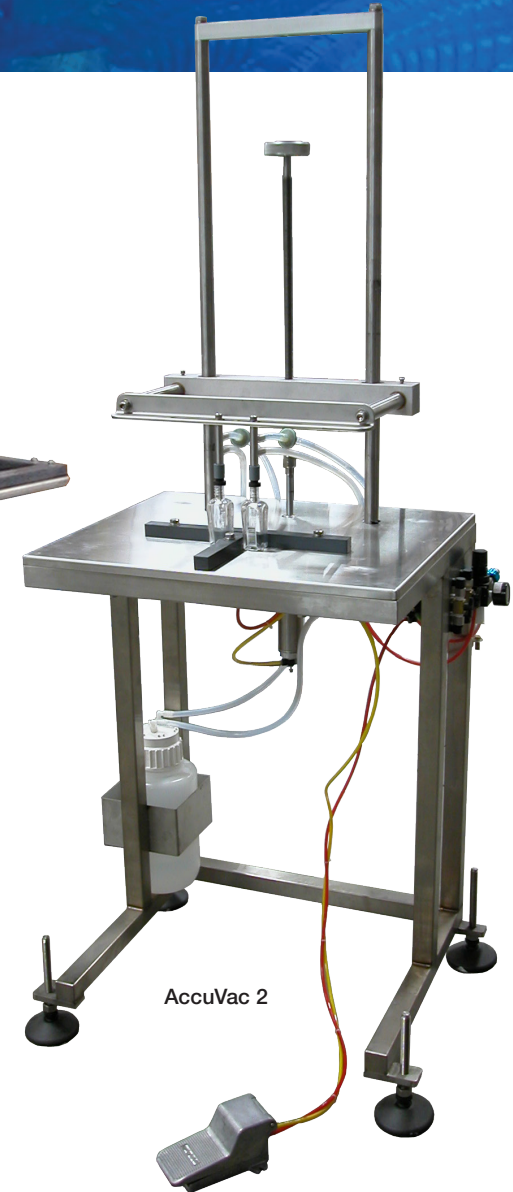
Semi-Automatic Vacuum Filling Machines

Key Features:

- Two, four, and six nozzle models available
- No drip Fill Nozzles
- Heavy Duty Sanitary Stainless Steel Frame
- All Pneumatic Operation (For hazardous products)
- Diving Head Package included
- Foot Pedal Operation
- Pneumatic Vacuum Pump
- Accumulation Tank
- Food Grade Plastic or Aluminum Slide Rail

Options:

- Custom Bottle Guides
- High Capacity Vacuum / Collection Chamber
- 316 Nozzles (Food Grade)
- Custom Size / Shape Nozzles
- Electric Vacuum Pump
- Casters



2980 Scott St, Vista CA 92081 • 760.734.4177 • Fax 760.734.4188
Email: sales@accutekpackaging.com • www.AccutekPackaging.com

ACCUTEK
Packaging Equipment Companies, Inc.

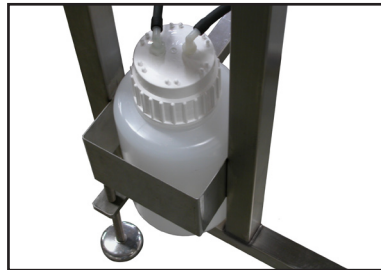
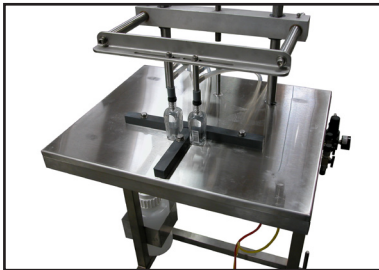
AccuVac

Semi-Automatic Vacuum Filling Machines

The **Accuvac Series** Filling Machines are ideal for filling nail polish, perfumes, light oils, and other small amounts of liquids. The fully pneumatic operation allows the **Accuvac Series** machines to be used with flammable liquids. They can fill as little as a 8 milliliter container up to a 32 oz. container in one dose.

The **Accuvac Series** are autoclaveable stainless steel, tabletop vacuum fillers with diving fill heads. The Accuvac fillers are completely self contained, portable, and require no electricity. These features make them ideal for filling everything from nail enamels to perfumes. Fill levels are adjustable and consistent regardless of the product by adjusting the nozzle depth. The fill levels remains visual equal regardless of product characteristics or container volume.

The **Accuvac Series** fillers are easy to operate and bottle changes are as easy as sliding new bottles under the fill heads and pushing the foot pedal. In addition to being a dedicated filler for your product line, the Accuvac fillers can also serve as an inexpensive backup unit, eliminating down time and costly set-up for small runs. The **Accuvac Series** models are some of our most affordable fillers.



Dimensions:

Height: 72" (182.88 cm)
Length: 24-48" (61-122 cm)
Depth: 24" (60.96 cm)

Weight:

Approx: 45 (20.41 kg)

Product Speed:

up to 60 CPM¹

Fill Size:

8ml - 32oz. (One Dose)

Electrical:

None

Air Requirements:

90 PSI - 2 CFM

Foamy Product: YES²

Corrosive Product: YES²

Heated Product: YES²

Particulates: YES²

Recommended Products:

Water, Perfumes, Essential Oils, Ink, Thin Liquid Soap, Light Makeup Remover, Alcohol, Food Coloring, Fruit Juices & Extracts, Liquid Tea, Liquid Coffee, Vegetable Oil, Light Juices, Some Salad Dressings, Shampoo's, Light Oils, Urethane, Silicone, Urine, and many more.

¹ Fill speed is dependent on: fill size, container dimensions, product characteristics, and machine model.

² Additional options or upgrade may be needed match the product characteristics or fill temperatures.

ACCUTEK
Packaging Equipment Companies, Inc.