

# APS-206 Labelers

Automatic Dual Head Pressure Sensitive Labeling Systems



## Key Features:

- Two label heads
- Auto Label Learn™ (Automatic label setup)
- Label heads dispense up to 6" (15.2 cm) tall labels
- Touch screen control system with job memory
- Heavy duty construction for 3 shift operations
- Sanitary stainless steel frame
- Easy to operate hand wheels for quick setup
- Conveyor with eight different speed selections
- Label dispensing tracks conveyor speed changes with optical container sensing
- Height adjustable

## Options:

- Hot stamp date/lot Coder
- Alpha numeric starter kit
- Conical label head for conical bottles
- Pneumatic separator
- Clear label sensor
- Casters

The APS-206 is economical, self-contained and easy to operate. This automatic labeling system comes equipped with a 10 ft. variable speed conveyor. Additional features include, stepper motor driven label dispenser, take up reel and label tampers. The easy to use design makes it simple to change bottle and label sizes. APS-206 can handle up to 6" tall labels. The APS-206 switches to the second label head when the first label head runs out of labels. Labels can be loaded on the first label head without stopping the machine.

The speed, versatility, and reliability of the APS-206 exceeds competing labelers, at a fraction of the price. Our versatile labelers apply labels to plastic, metal, fiber, and glass containers. The APS-206 handles a variety of container shapes.

### Dimensions:

79" x 53" x 45"

### Weight:

~575 lbs. (260 kg)

### Labeling Speed:

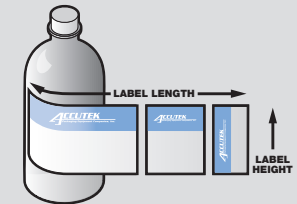
Up to 175 CPM<sup>1</sup>

### Electrical:

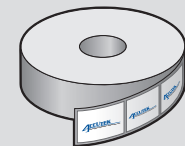
110 VAC - 10APMS  
(220VAC Optional)

### Labeling Direction:

Left side off - Outside peel



Label Dimensions



Label Direction  
(Left Side Off - Outside Peel)

**Labelette**  
Labelers®

2980 Scott St, Vista CA 92081 • 760.734.4177 • Fax 760.734.4188  
Email: Sales@AccutekPackaging.com • AccutekPackaging.com

**ACCUTEK**  
Packaging Equipment Companies, Inc.