

# APS and PSA Series Labelers

Automatic Pressure Sensitive Labeling Systems



## Key Features:

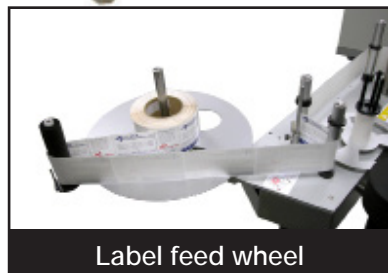
- In-Line Automatic Applications
- Touch Screen Control System with Job Memory
- Heavy Duty Construction built for 3 Shift Operations
- Sanitary stainless steel frame
- Sanitary Stainless Steel Thick Wall Frame
- Fully synchronized conveyor / label head, with 8 different speed selections
- Easy Adjusting Hand Wheels for Quick
- Synchronized Operation
- Synchronized Powered Wrap Station
- Infeed Separator Wheel Setup

## Options:

- Alpha Numeric Starter Kit
- Pneumatic Separator
- Star Wheel Separator
- Clear Label Sensor
- Conical Label Heads for Conical Bottles
- Thermal Transfer Printer



Wrap Station



Label feed wheel



Thermal Transfer Printer

2980 Scott St, Vista, CA 92081 • 760.734.4177 • Fax 760.734.4188

Email: [Sales@AccutekPackaging.com](mailto:Sales@AccutekPackaging.com) • [AccutekPackaging.com](http://AccutekPackaging.com)

**ACCUTEK**  
Packaging Equipment Companies, Inc.

# APS and PSA-100 Series Labelers

Automatic Pressure Sensitive Labeling Systems

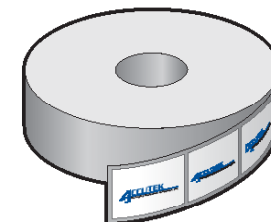
APS-100 Series Labelers are automatic labelers ideal for applying a single pressure sensitive label to a container. Depending on the model, labelers can place 5.75" (14.5 cm) or 7.75" (19.5 cm) tall single face or single wrap around pressure sensitive labels. Each automatic labeling system is self contained and easy to operate complete with a variety of standard features. Features such as, a high torque digital drive for ensuring precise label application with low maintenance operation. Variable speed conveyor for speeds up to 175<sup>1</sup> CPM. A full wrap or tamp station to eliminate label wrinkling or creasing. And a non contact Photo Eye detection system for accurate timing and label placement.

One of the best features of the Labelette APS-100 Series labelers is the included Auto Label Learn software. This easy to use program allows the operator to make on the fly bottle and label adjustments using the touch screen controls. This feature will makes change over easier and quicker helping to eliminate production down time.

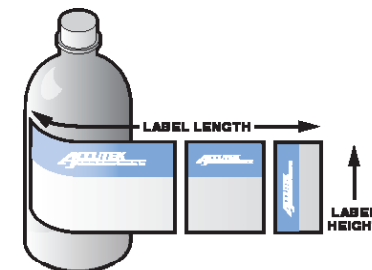
With the ability to label plastic, metal, fiber, or glass containers the APS-100 Series Labelers are a great addition to any packaging line.



Examples of products labeled with pressure sensitive labels.



Label Direction  
Left Side OFF - Outside Peel



Label Dimensions

**Labelette**  
Labelers®

**ACCUTEK**  
Packaging Equipment Companies, Inc.

\* Labeling speed is dependant on operator, container dimensions, and label size.

## APS-106

Automatic Labeling System with 6" Single Label Head



### Unit Specifications

Dimensions: Length: 80", Width: 28", H:42" (203.2 cm),(W: 71.12cm)(H: 106.68cm)  
Weight: ~347 lbs  
Electrical Requirements: 110 VAC, 10AMPS (220 VAC Optional)  
Air Requirements: None

### Output

Labeling Speed: Up to 165 CPM<sup>1</sup>

### Label Size

Label Length: 0.5" - 15"<sup>2</sup>  
Label Height: 0.5" - 5.75"  
Labeling Direction: Left side off - Outside peel

<sup>1</sup> Labeling speed is dependant on operator, container dimensions, and label size.  
<sup>2</sup> May required additional options for longer label lengths.

## PSA-108

Automatic Pressure Sensitive Label Applicator

The actual machine might looks different than the picture. Picture are for reference only.



**With Servo Stepper Drive**

### Unit Specifications

Dimensions: Length: 99", Width: 44", H:44" (251.46cm),(W: 117.76cm)(H: 117.76cm)  
Weight: ~483 lbs  
Electrical Requirements: 110 VAC, 10AMPS (220 VAC Optional)  
Air Requirements: None

### Output

Labeling Speed: Up to 185 CPM<sup>1</sup>

### Label Size

Label Length: 0.5" - 21"  
Label Height: 0.5" - 8"  
Labeling Direction: Left side off - Outside peel (counter-clockwise)

<sup>1</sup> Labeling speed is dependant on operator, container dimensions, and label size.  
<sup>2</sup> May required additional options for longer label lengths.